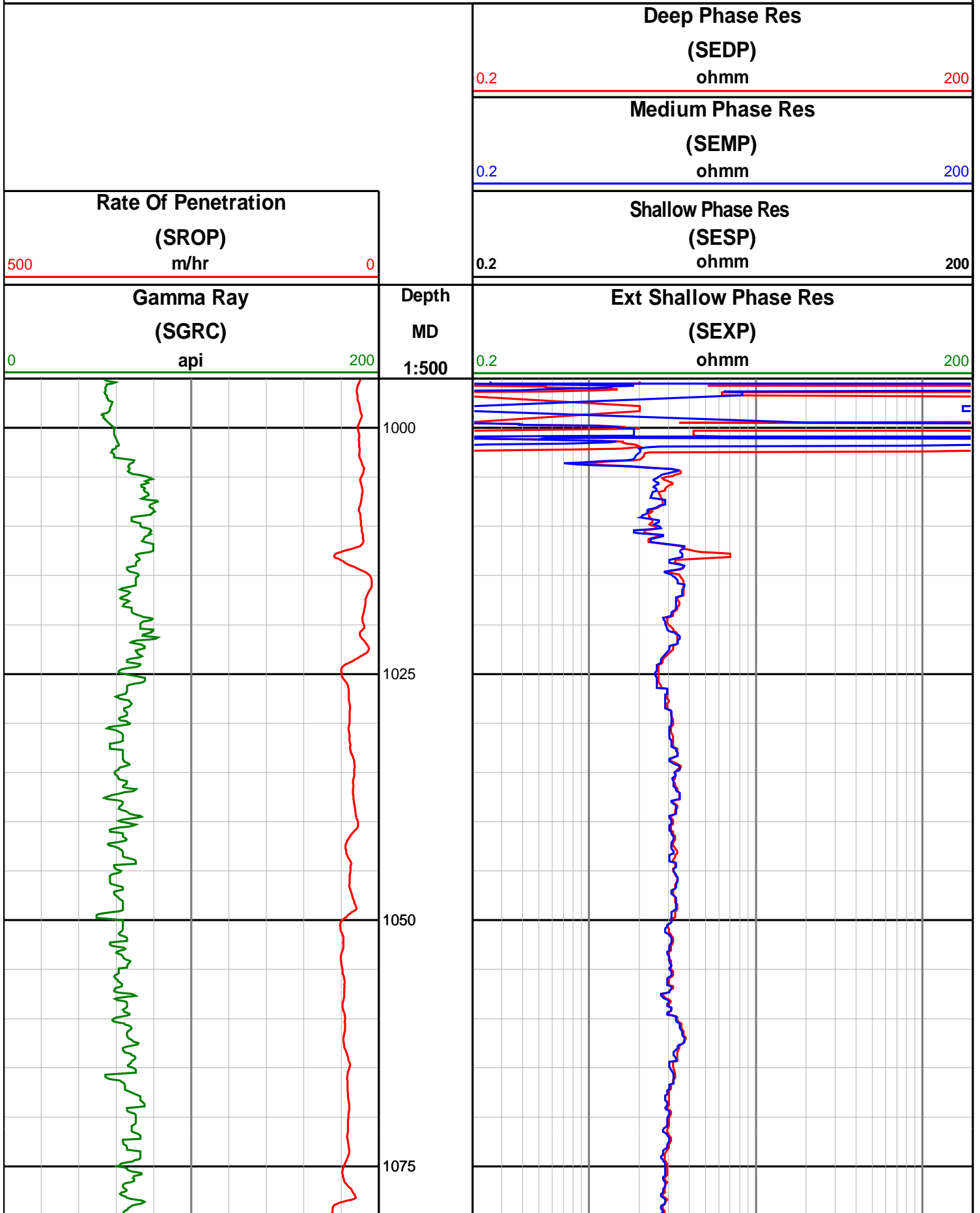
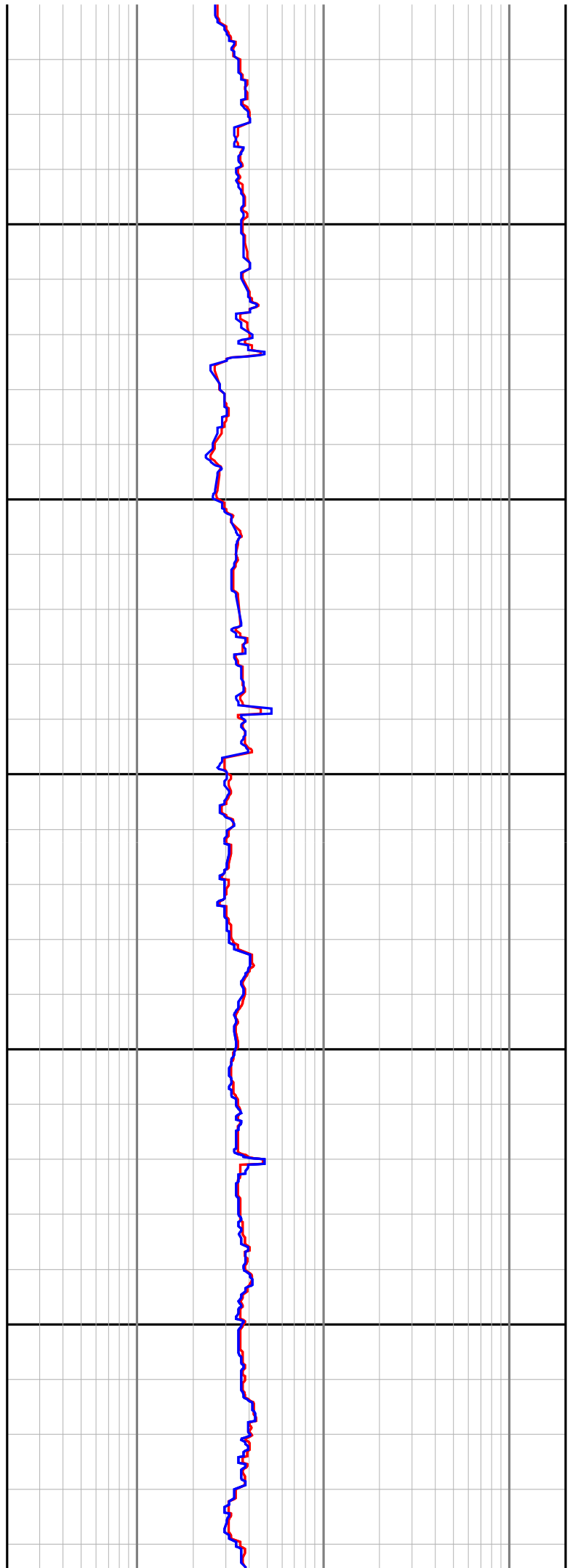
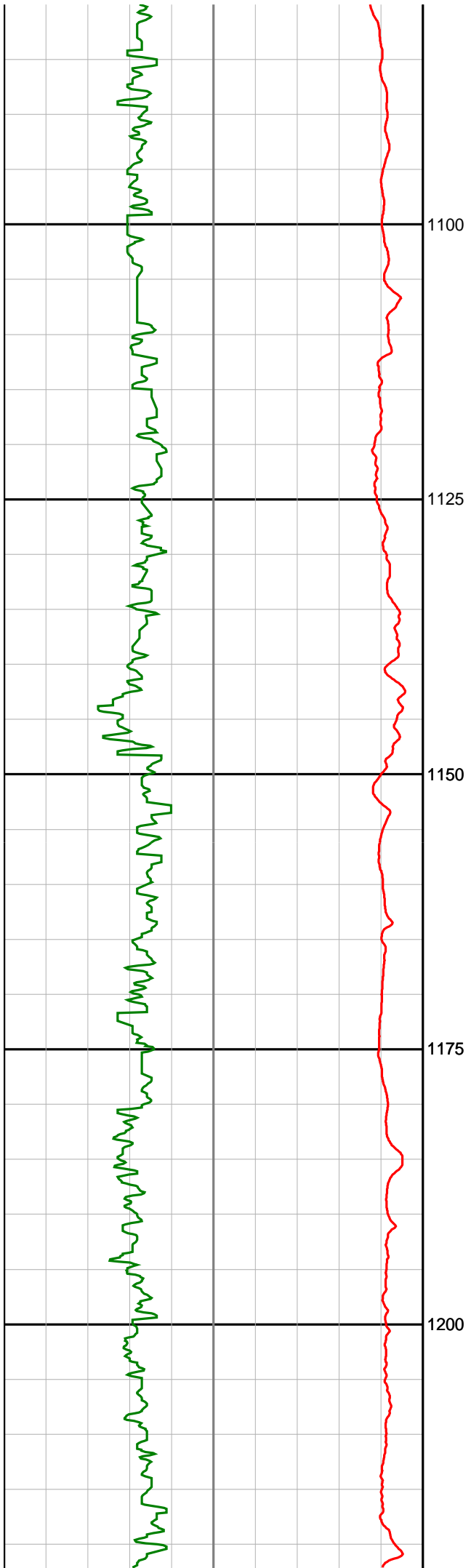


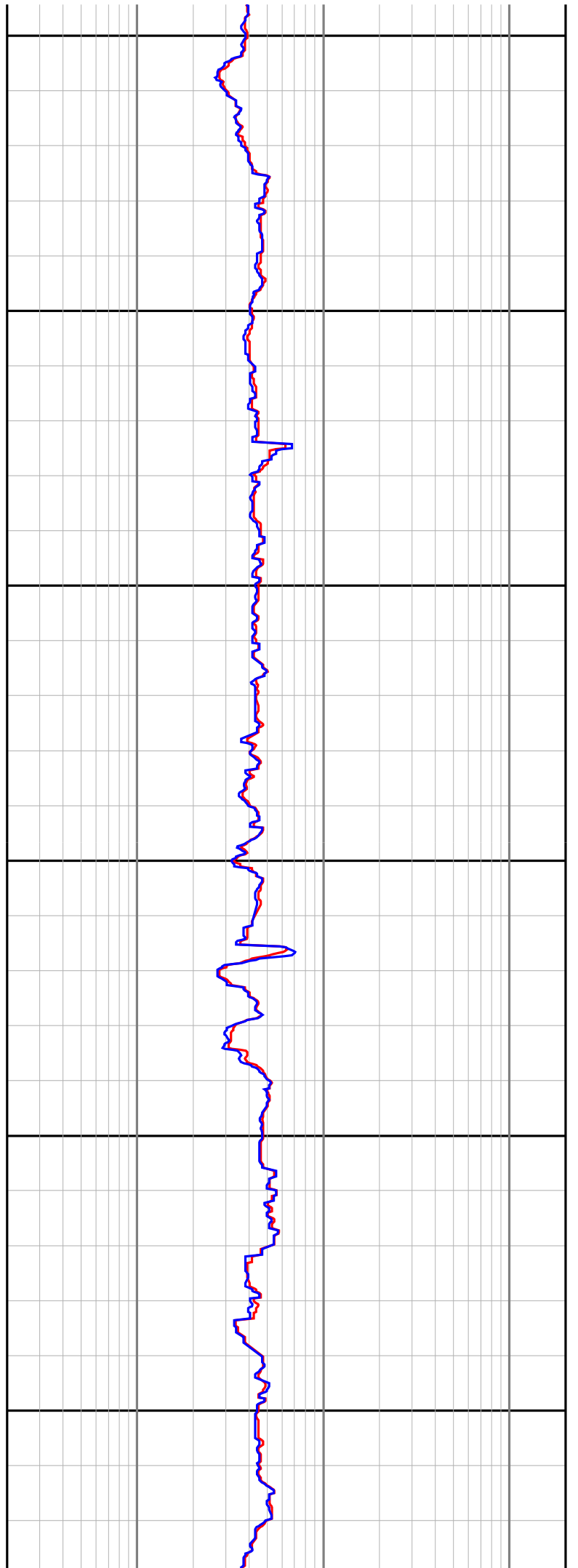
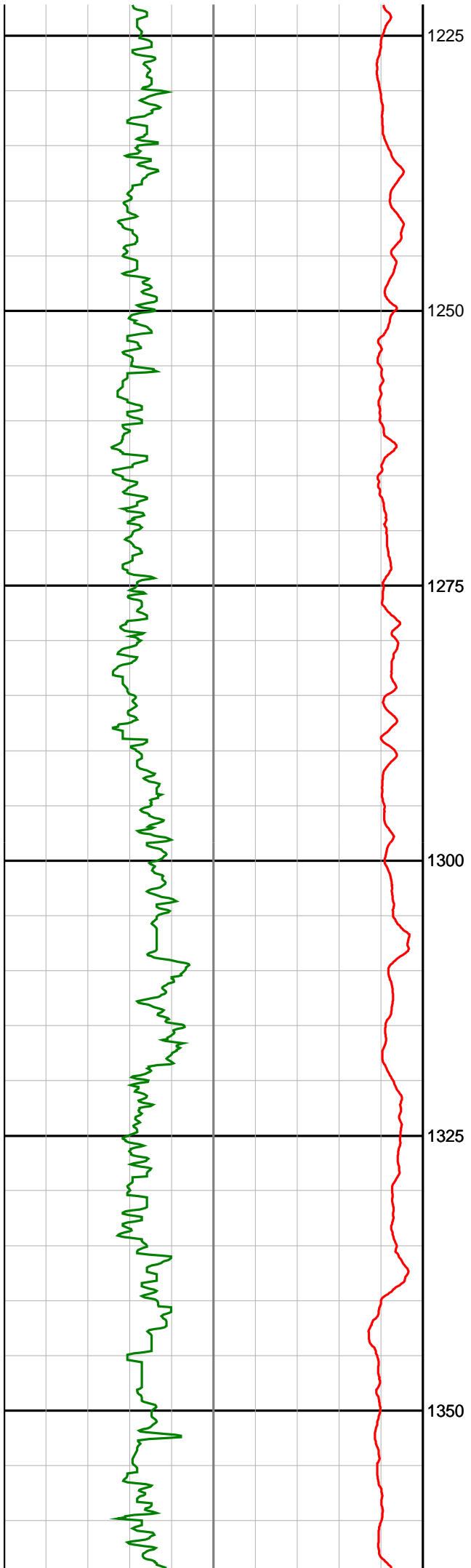
# Anzon Australia Ltd

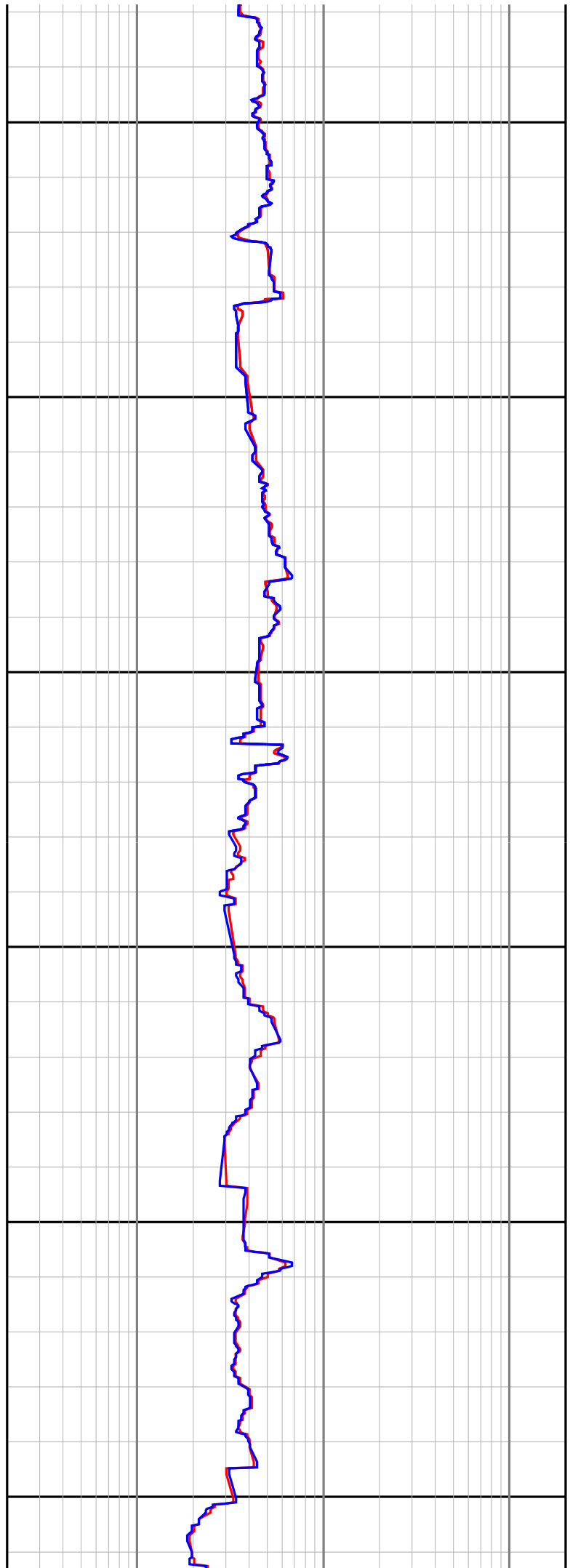
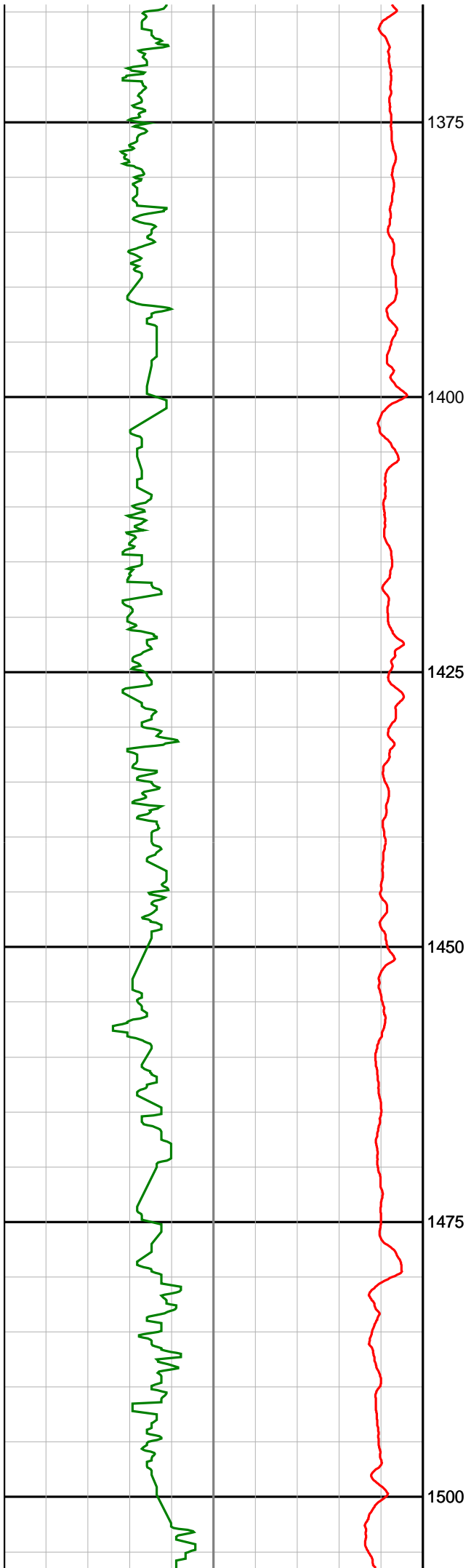
## Basker-5

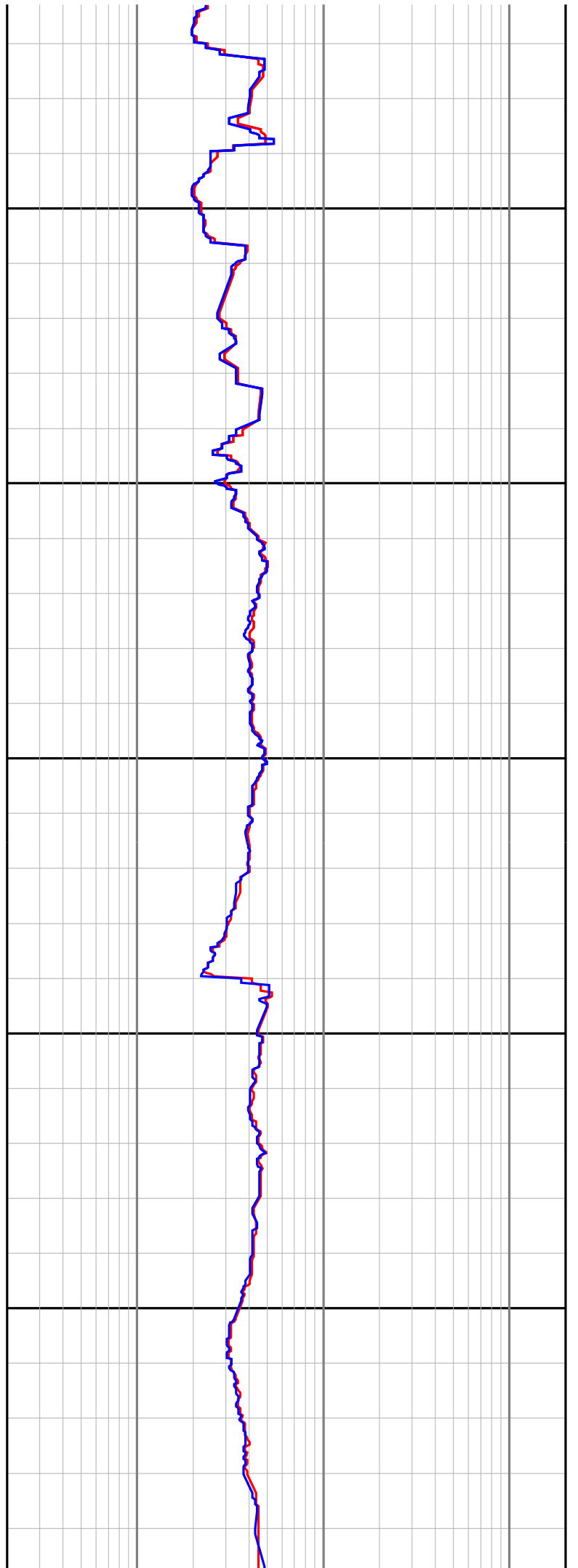
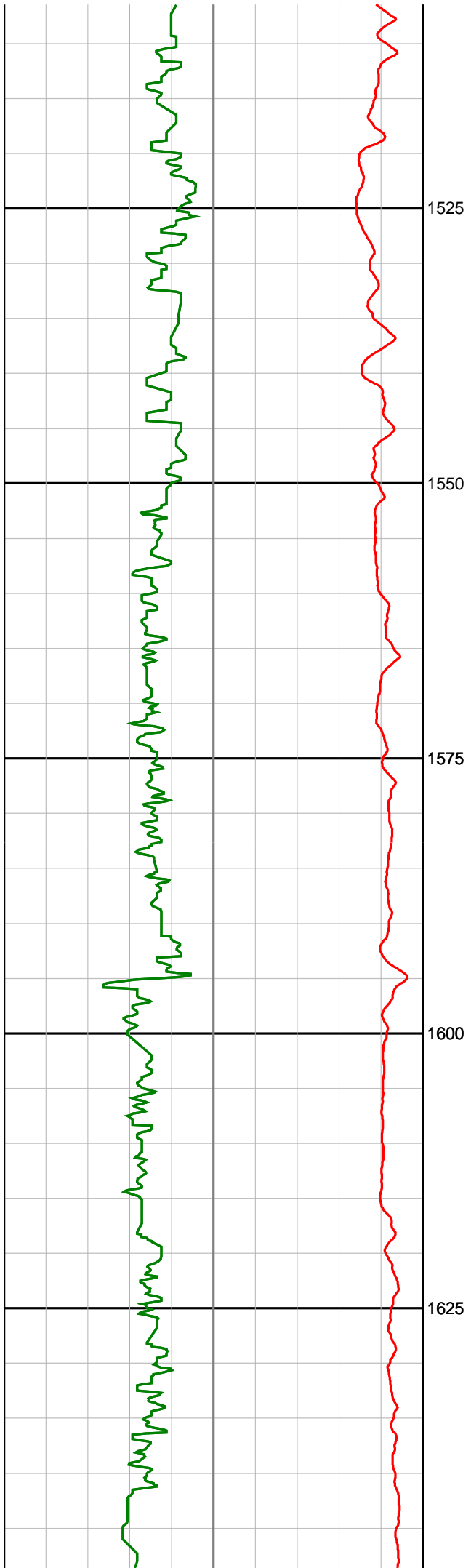
Realtime LWD Log (Permanent Datum - LAT)

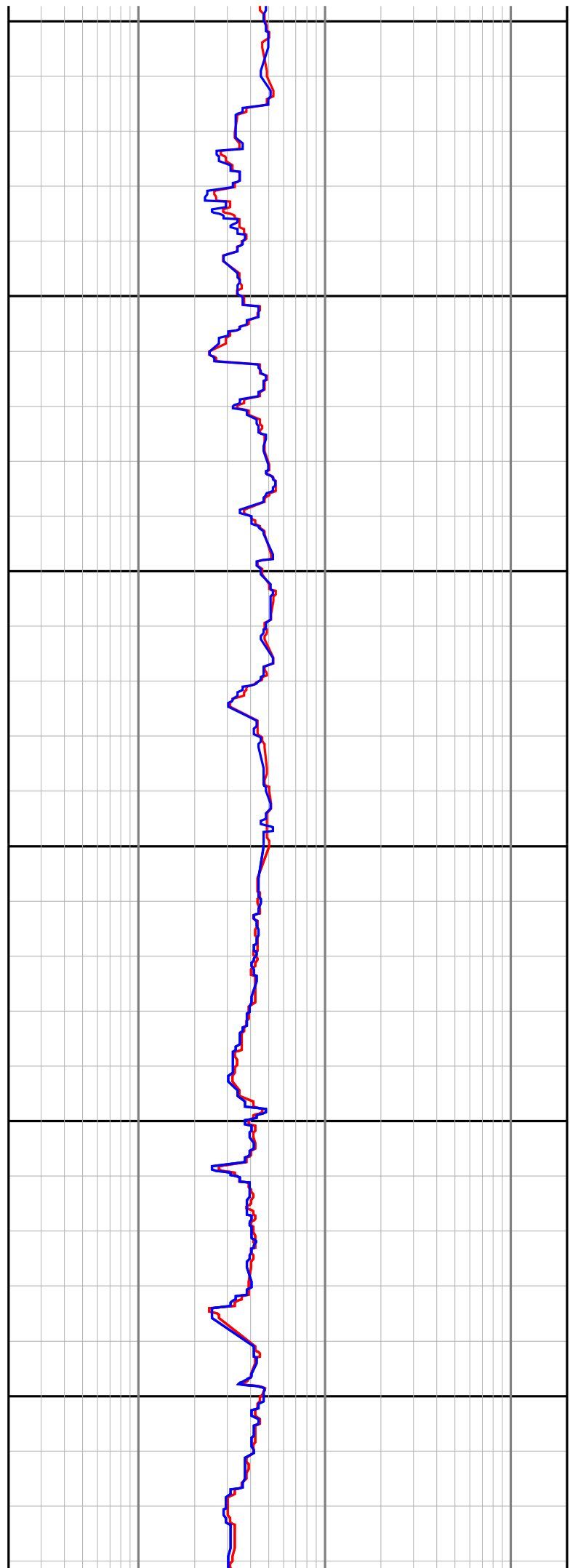
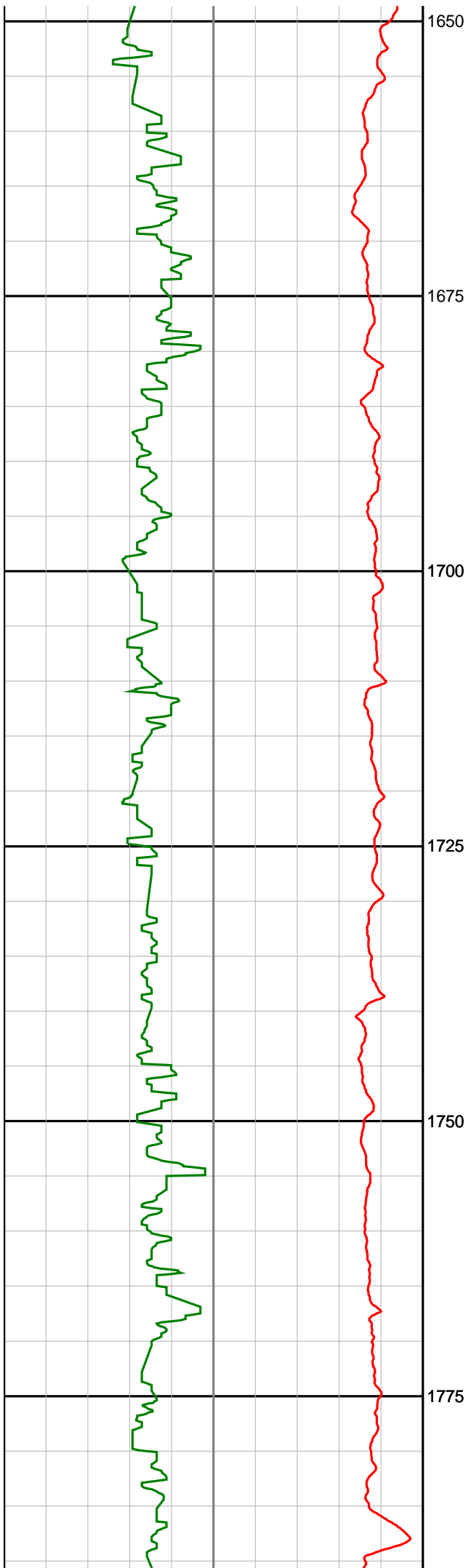


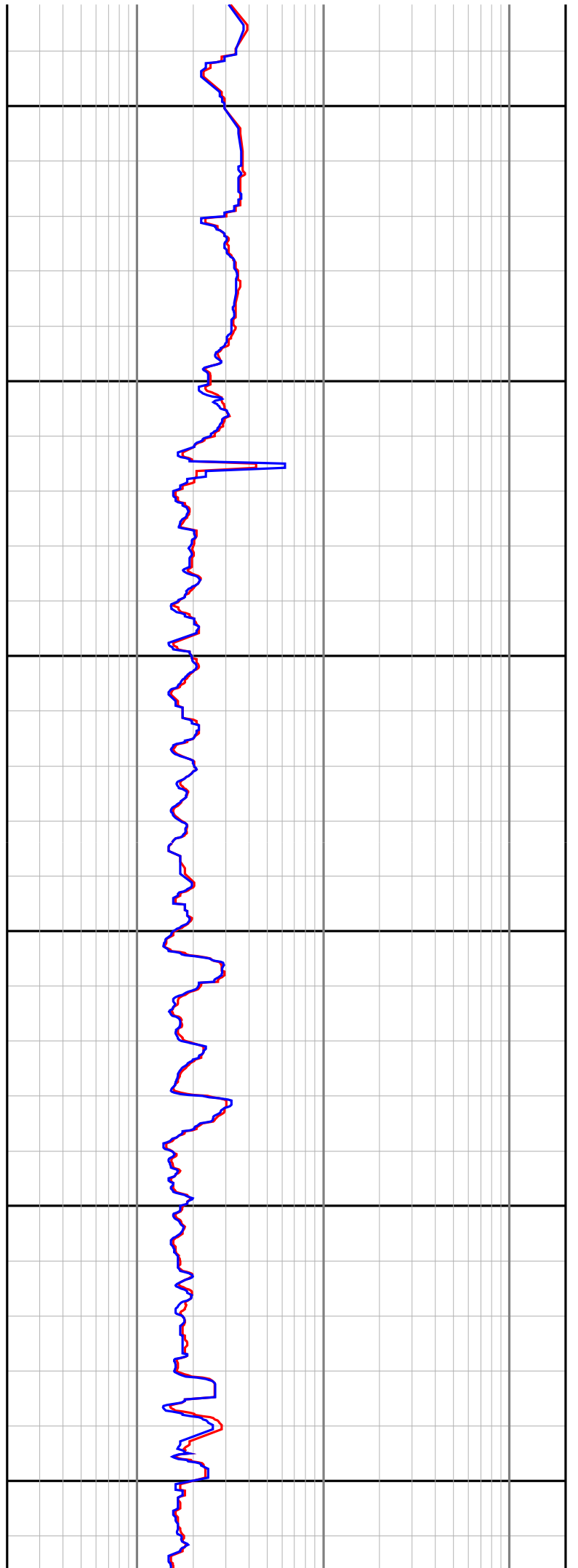
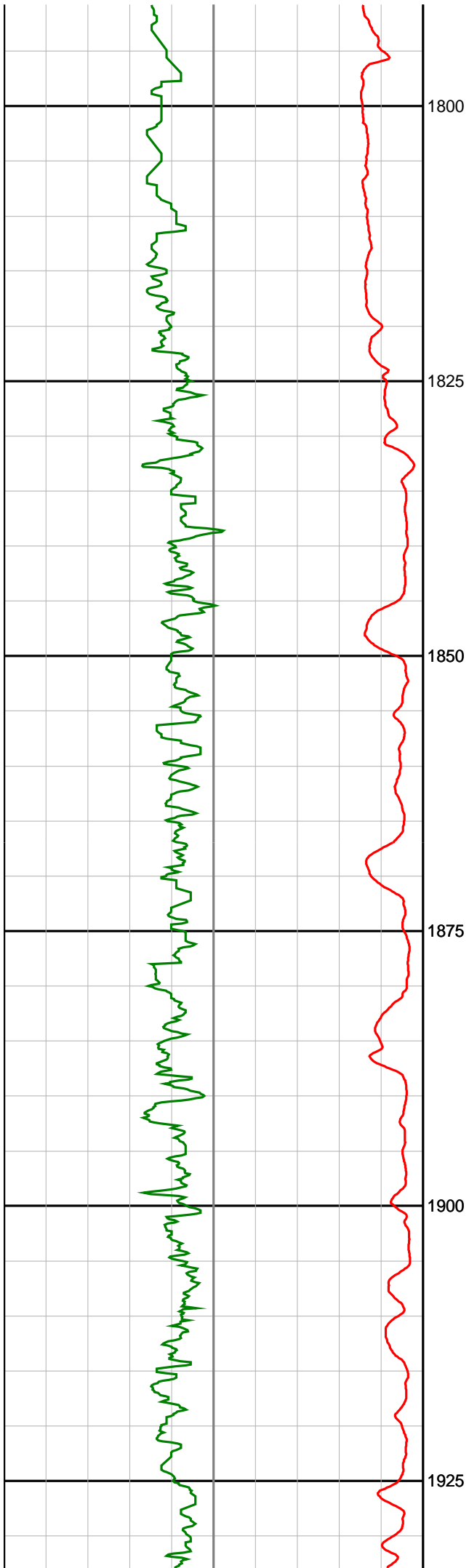


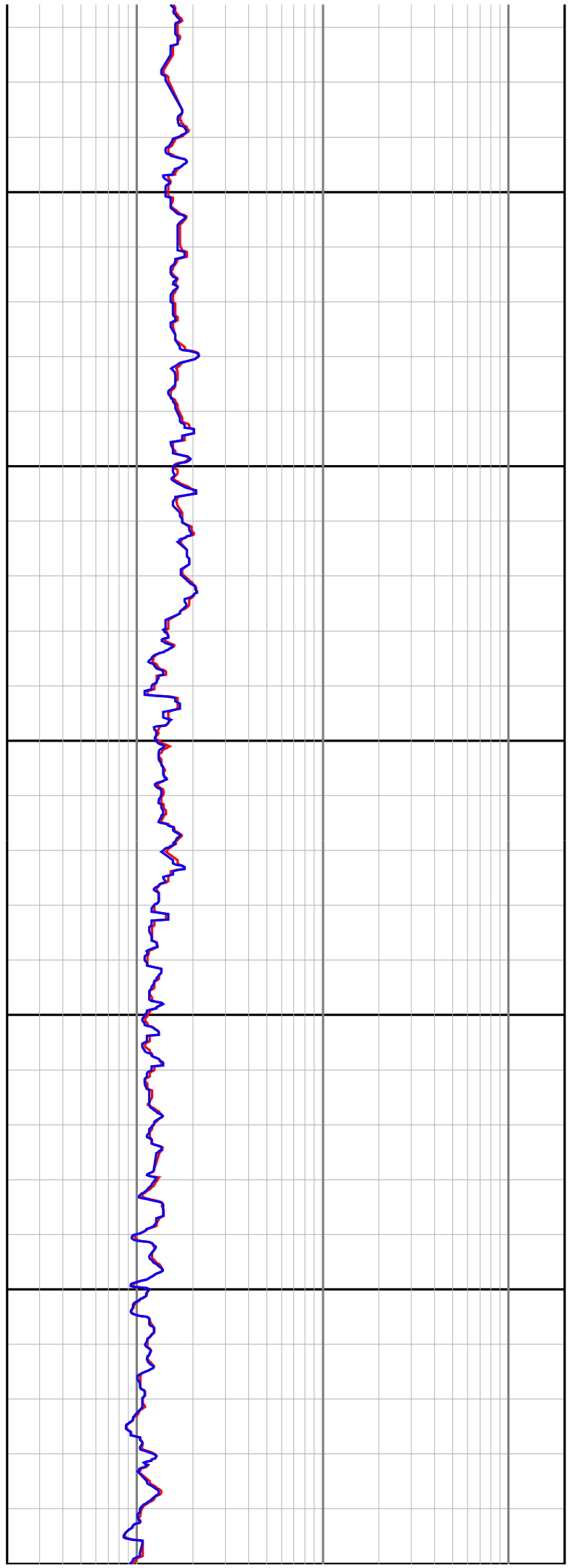
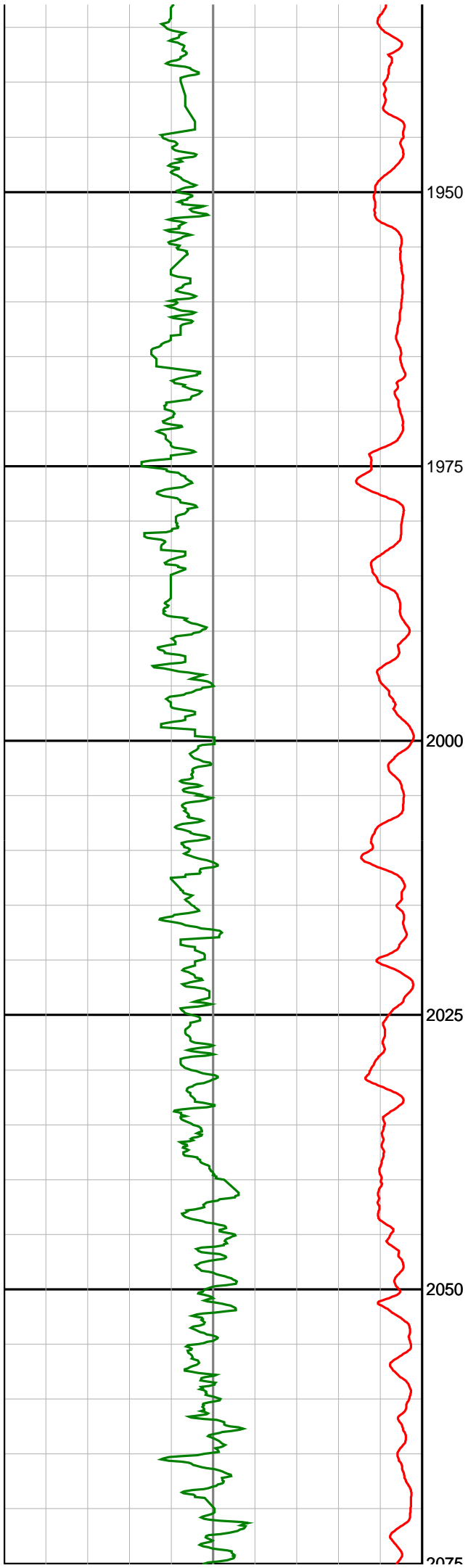




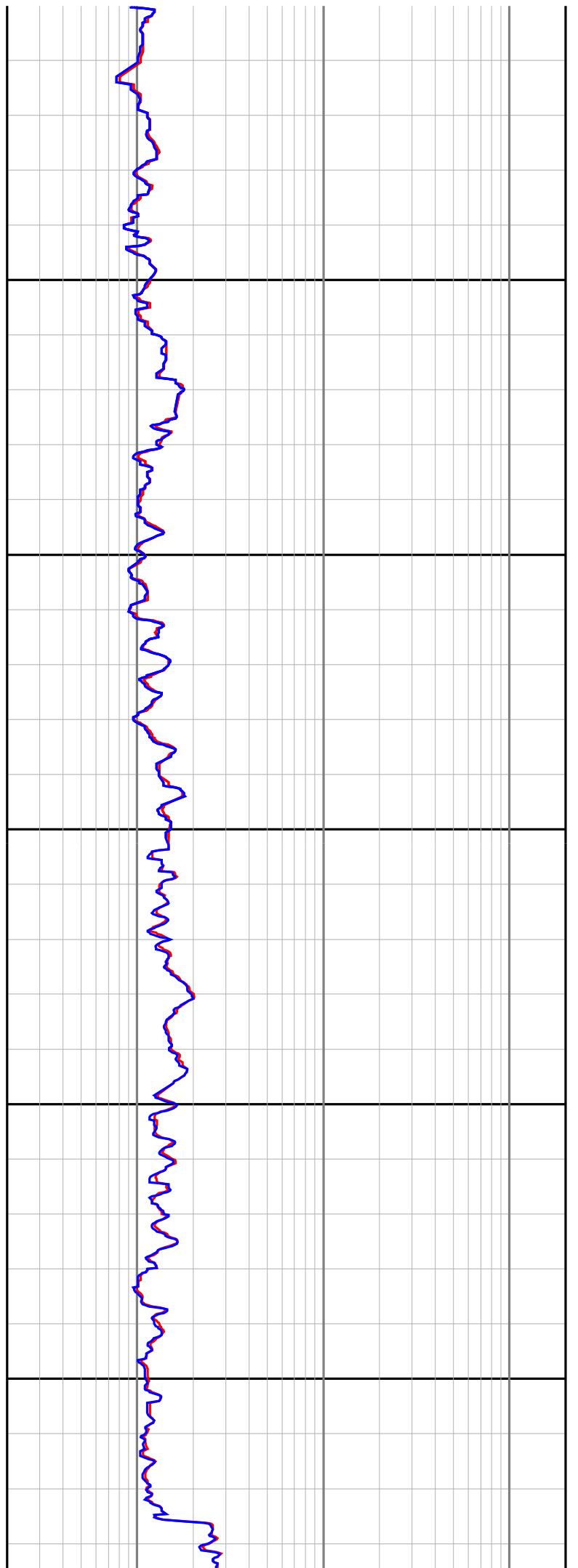
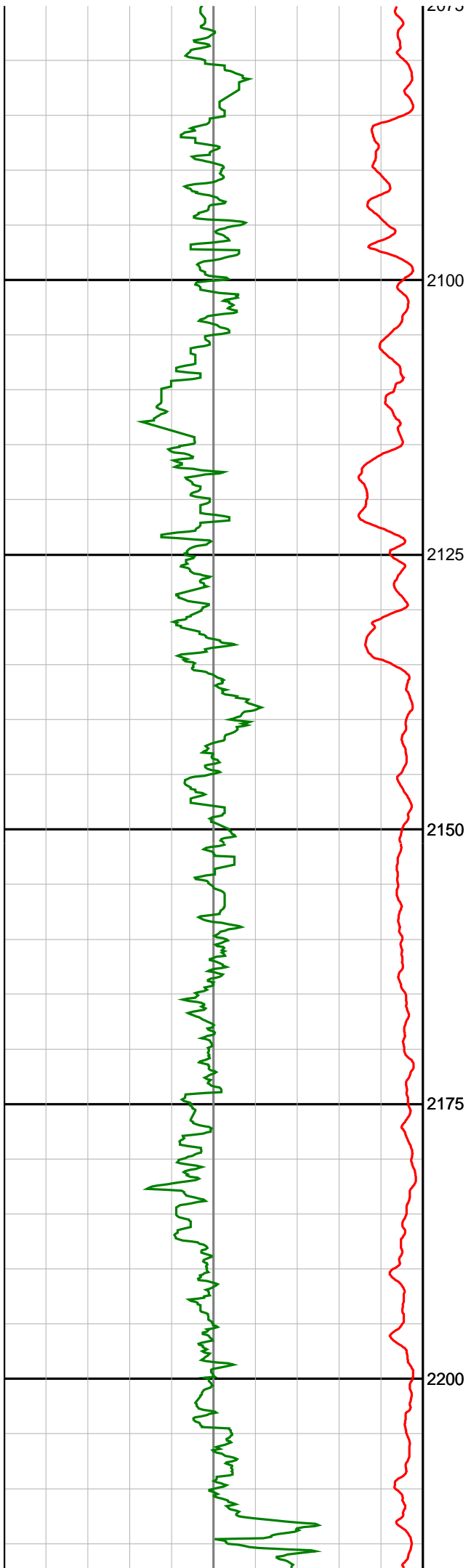


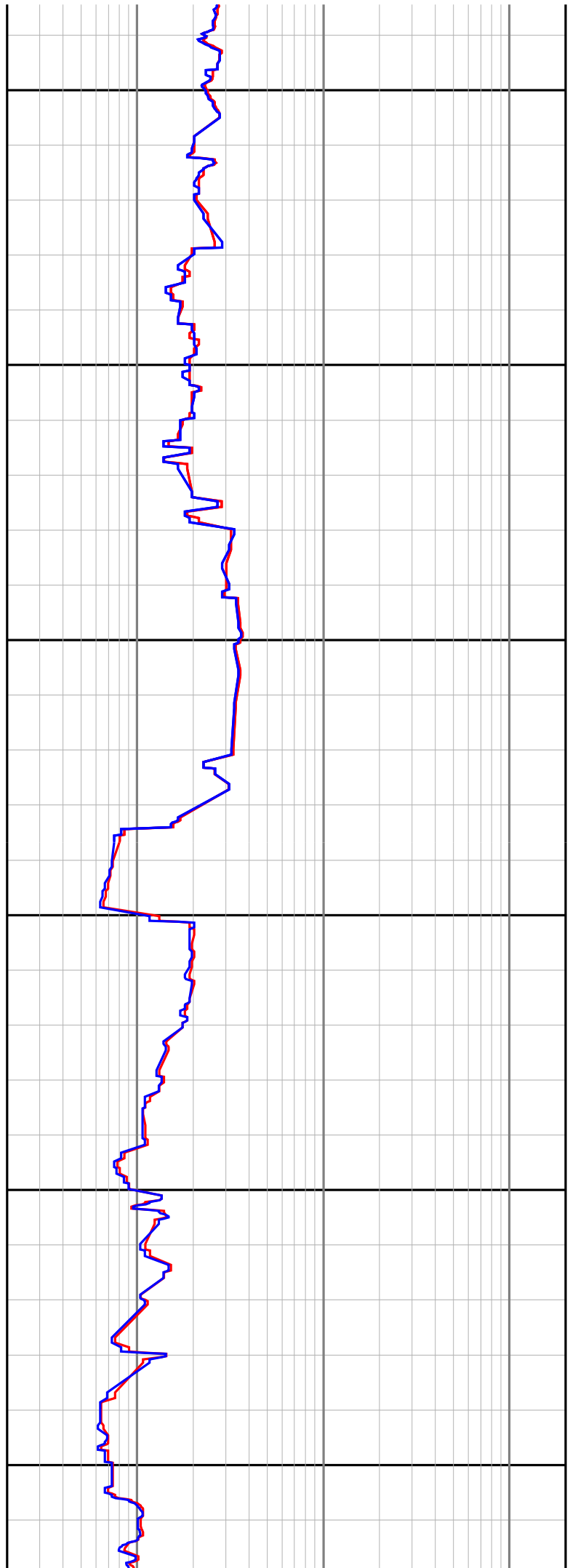
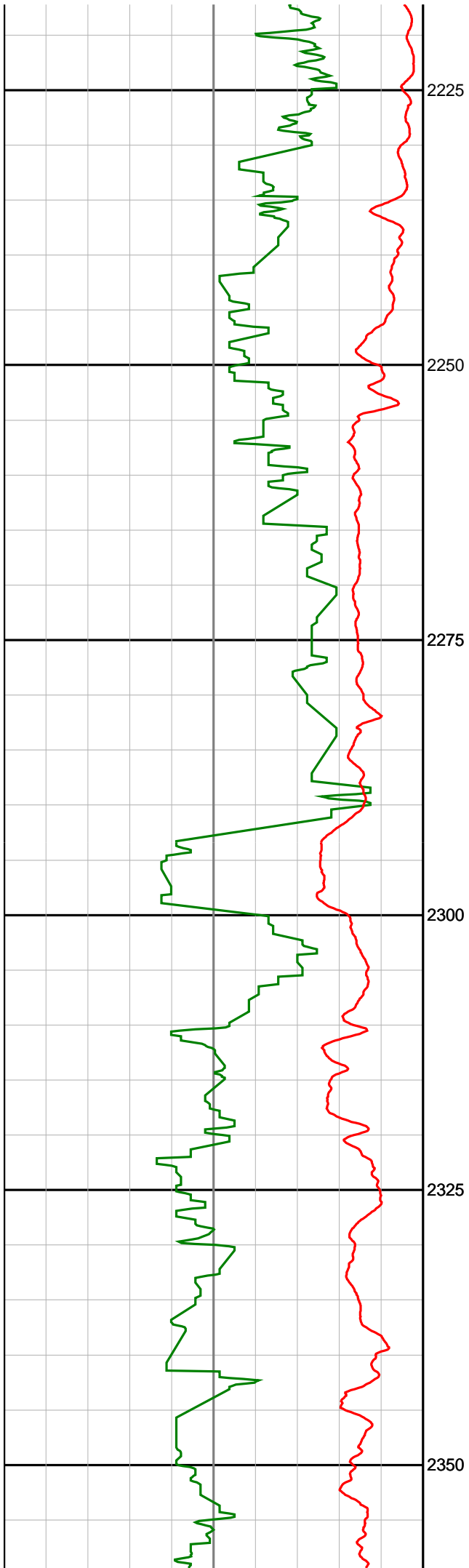


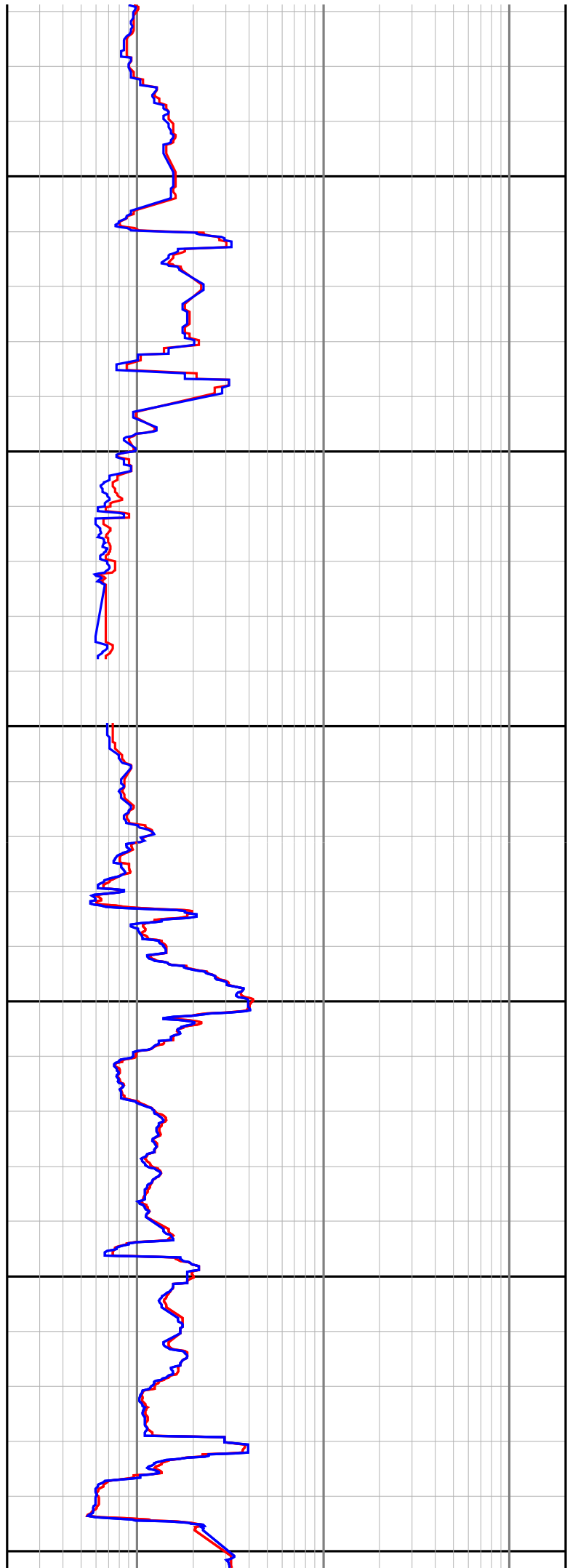
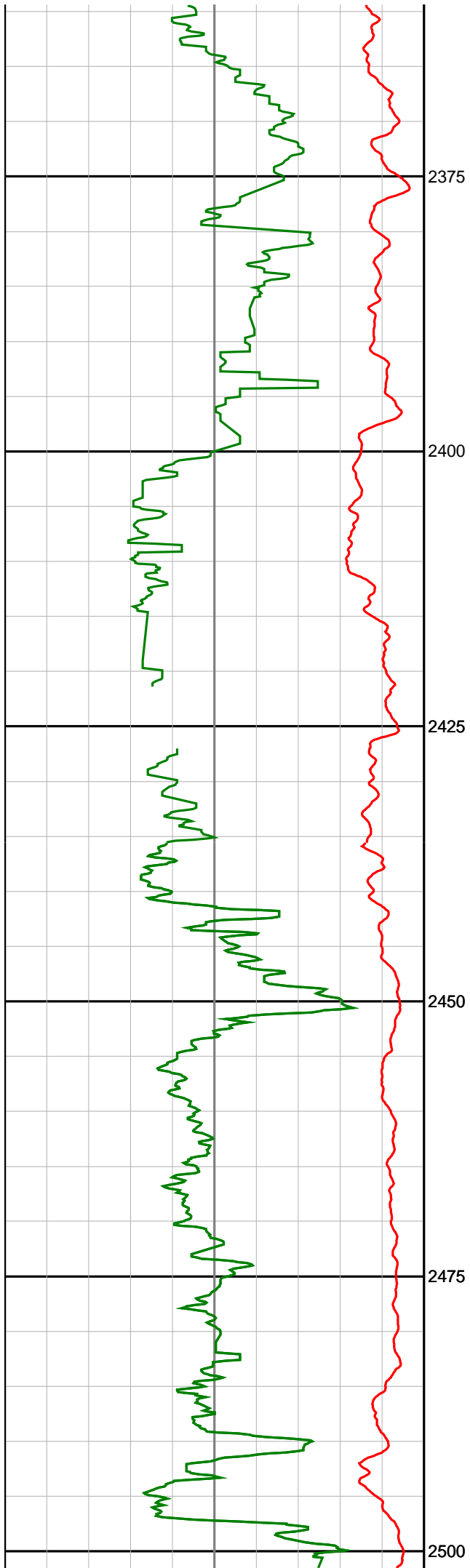


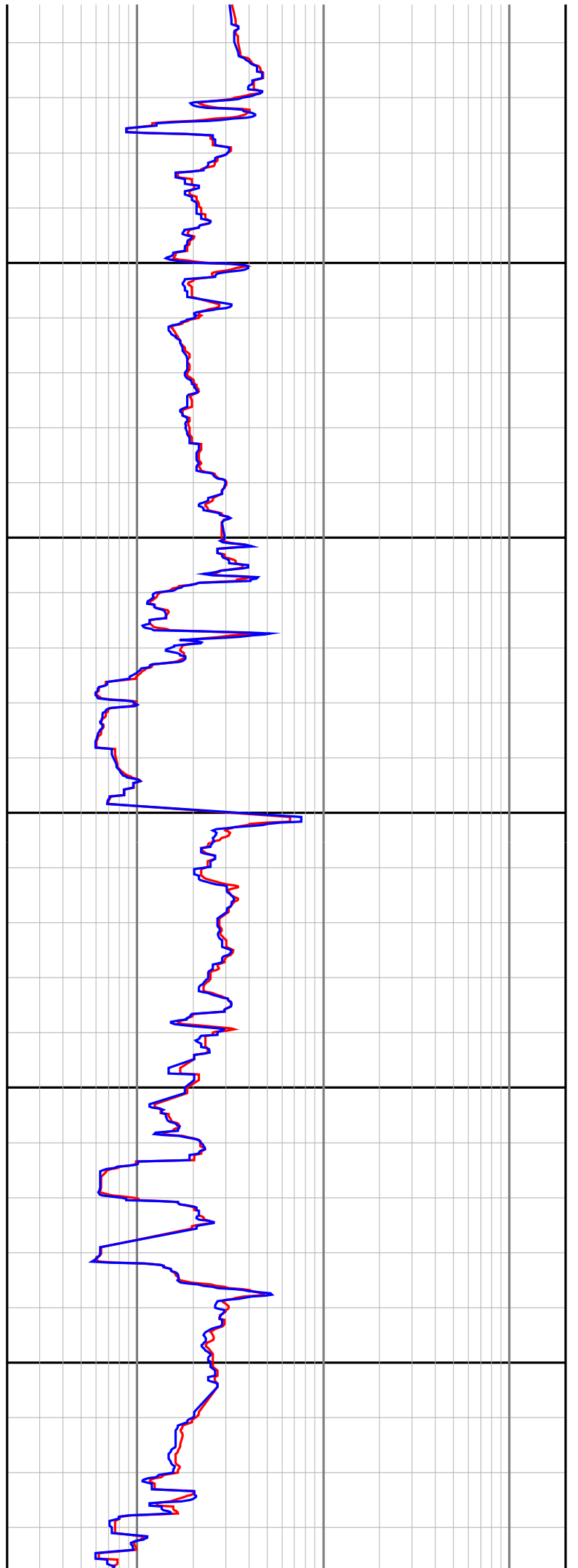
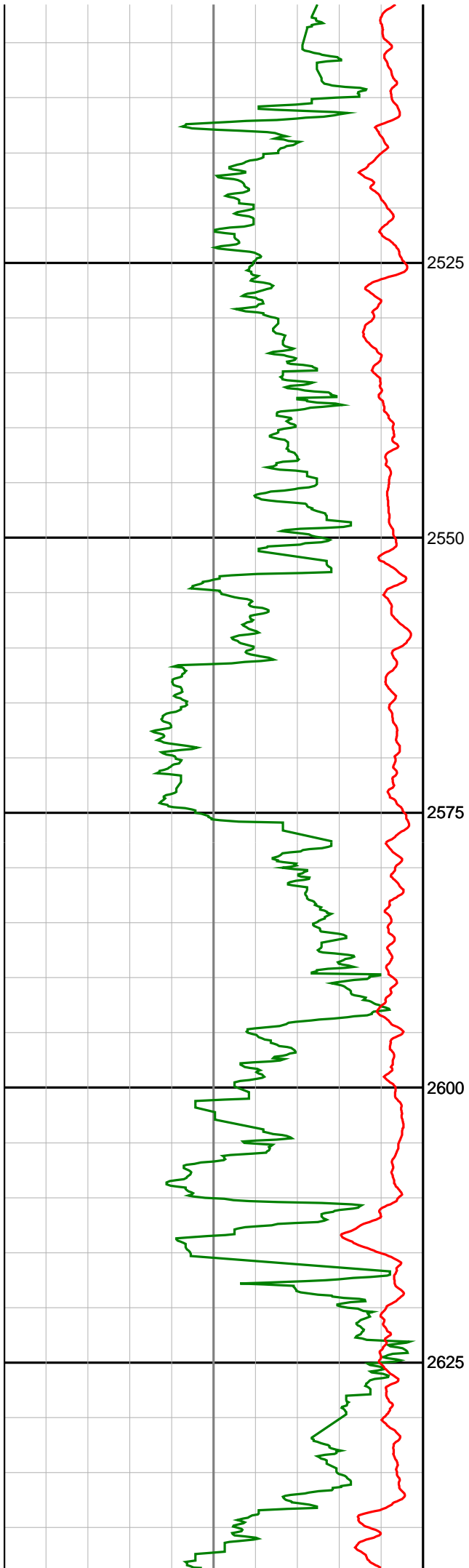


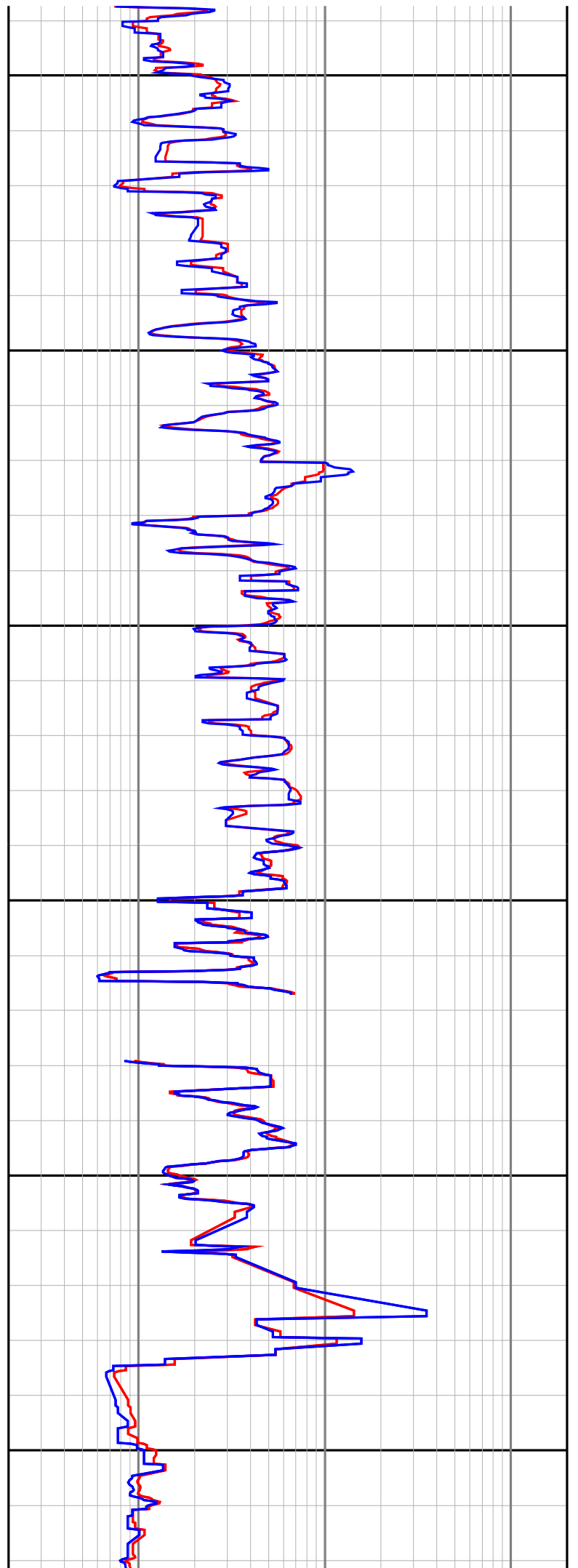
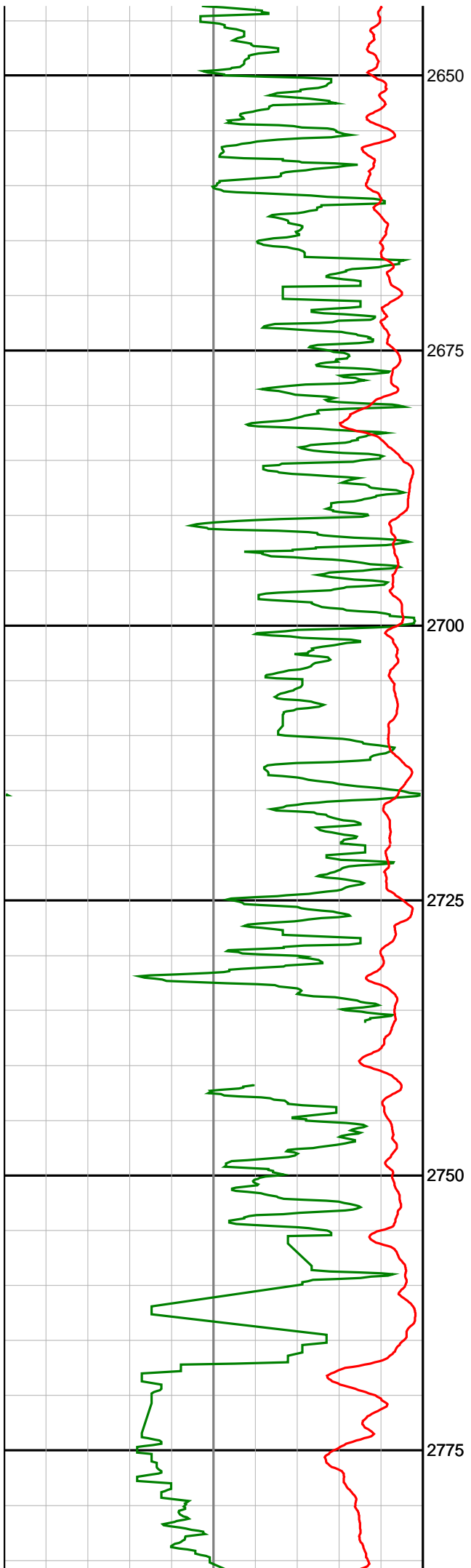


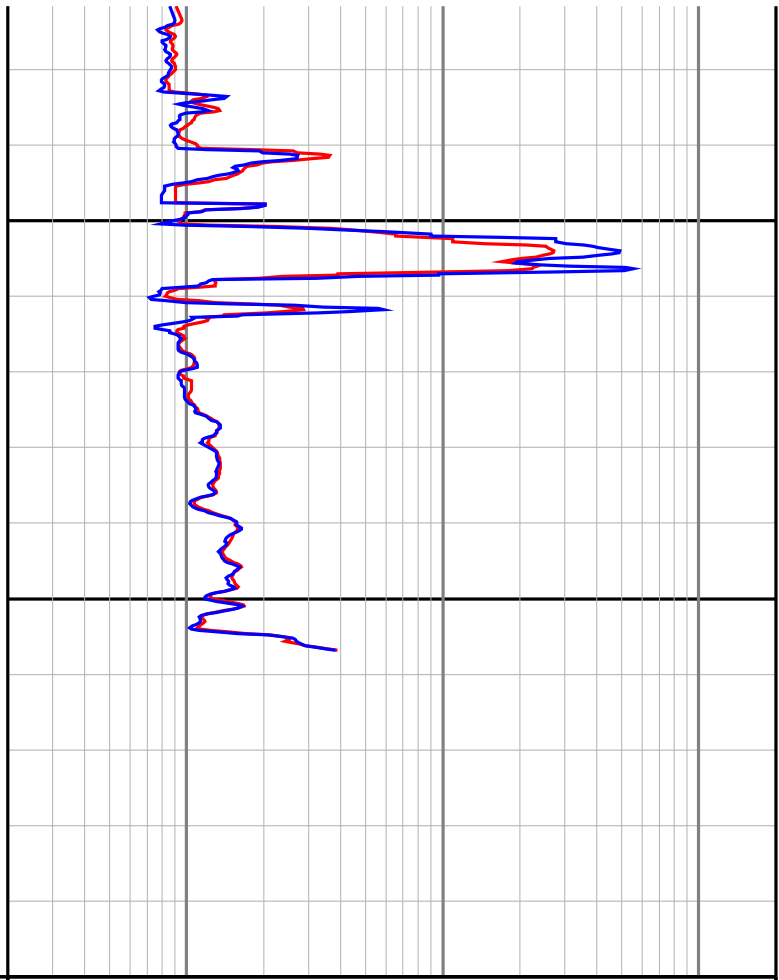
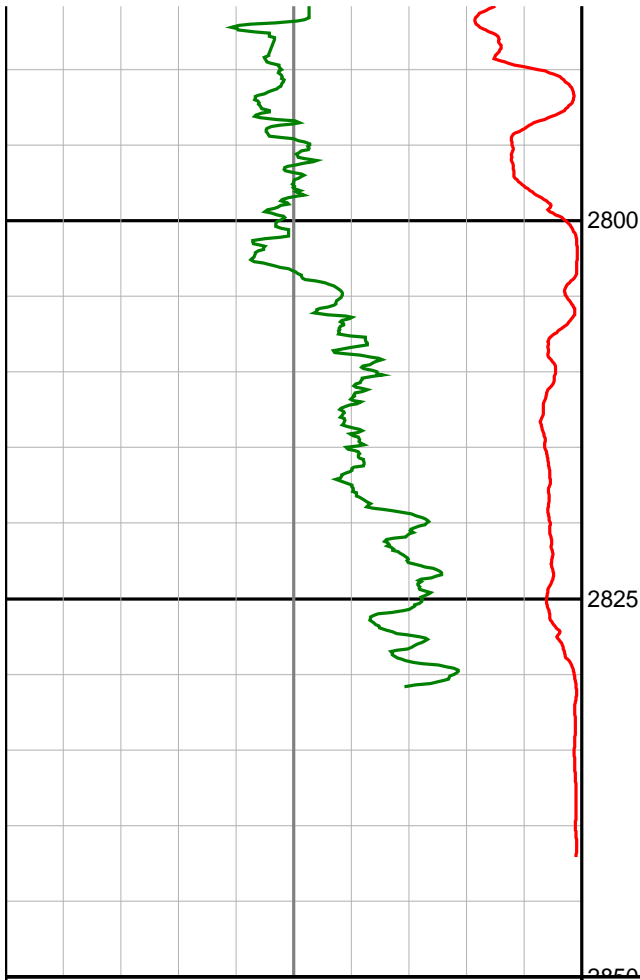












<p><b>Gamma Ray (SGRC)</b> api</p> <p>0 200</p>	<p><b>Depth MD</b> 1:500</p>	<p><b>Ext Shallow Phase Res (SEXP)</b> ohmm</p> <p>0.2 200</p>
<p><b>Rate Of Penetration (SROP)</b> m/hr</p> <p>500 0</p>		<p><b>Shallow Phase Res (SESP)</b> ohmm</p> <p>0.2 200</p>
		<p><b>Medium Phase Res (SEMP)</b> ohmm</p> <p>0.2 200</p>
		<p><b>Deep Phase Res (SEDP)</b> ohmm</p> <p>0.2 200</p>